

---

# **APOLLO BUCKET ELEVATOR**

**---- New Efficient Process for your  
Bulk Material Handling**

SUZHOU CIDI M&E CO., LTD

2011.3

# Traditional Bucket Elevator

---

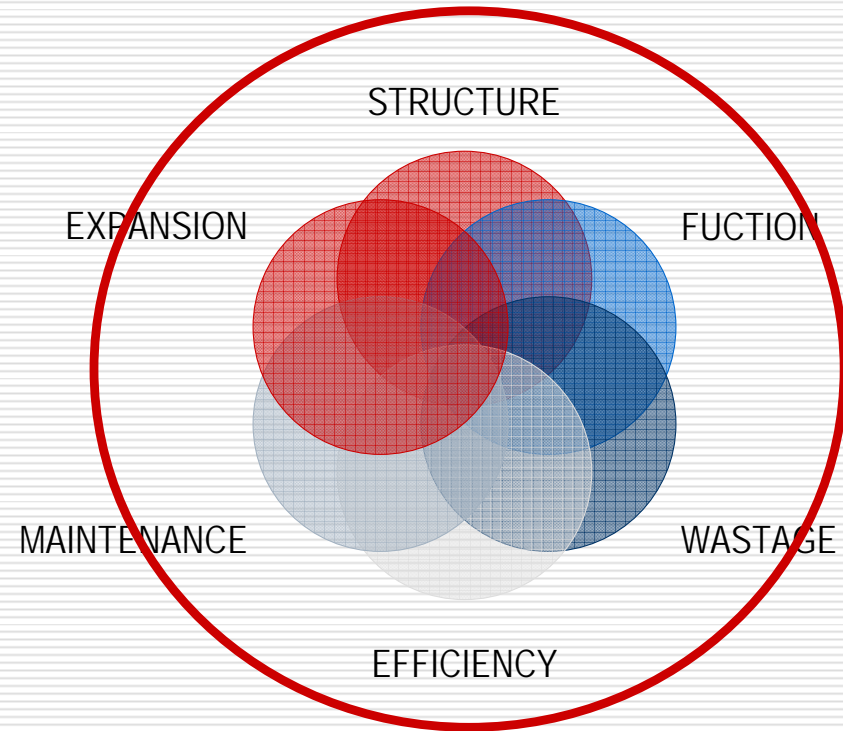
- ❑ Vertical Conveying Equipment
- ❑ Sole Type & Sole Structure
- ❑ Large Amount Leakage of Material
- ❑ Heavy Energy Consumption
- ❑ Easy Wearout, Difficult Maintenance
- ❑ Serious Environmental Pollution



# The Requirements for Modern Process

---

- ❑ Simple & Compact Structures
- ❑ Function Optimization, Small Space
- ❑ No Leakage, No Product Loss
- ❑ High Production Efficiency
- ❑ Convenient Installation & Maintenance
- ❑ Easy Extension For Process Adjustment & Expansion



# Present New Type Bucket Elevator

---

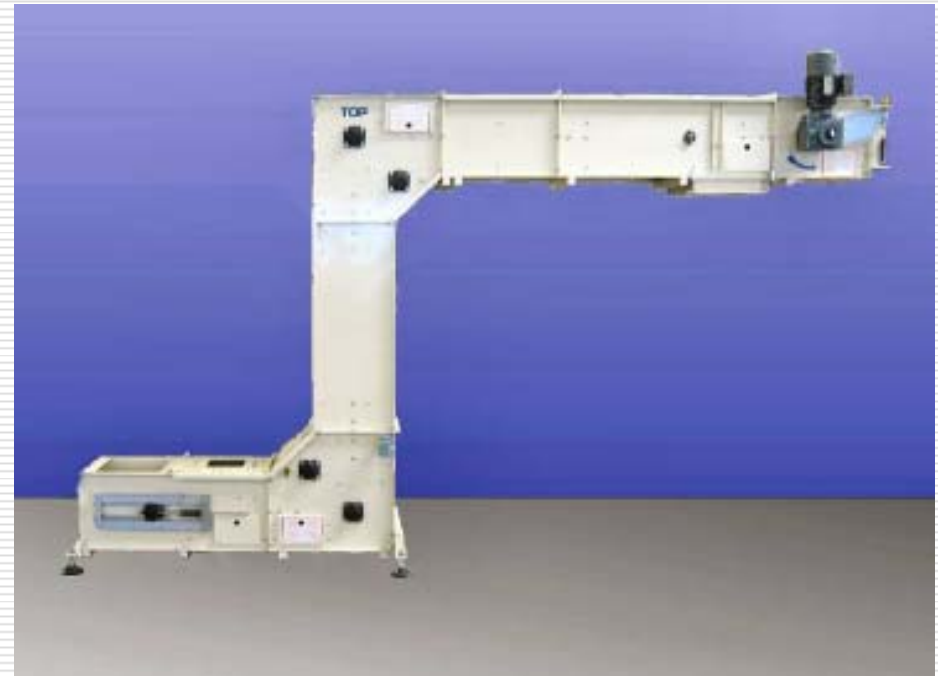
- ❑ Combining with 40 years design and manufacturing experience, keep the continuously optimize and improve
- ❑ Integrating the features of chain scraper conveyors, belt conveyors and tube chain conveyors
- ❑ Combining both vertical and horizontal conveying model, multiports of feeding inlets and discharging outlets, extension available



# Innovations of feature

---

- No damage or change of product
- Modular design
- Multiple of Routes, One drive
- Overlapping buckets
- Easy to install
- Low maintenance
- Additional options



# Innovations of feature

---

- No damage or change of product



Our bucket elevators are built to ensure that during transport no damage, mixing or change of product composition is possible.

# Innovations of feature

---

□ Modular design



The modular design accommodates a wide range of configurations and makes the elevators easy to install and modify. The most common configurations are the C and Z versions.

The full modular construction of the bucket elevator makes adjustments simply to realise in case of change of the internal transport routes.

# Innovations of feature

---

- Multiports of Routes, *One Drive*



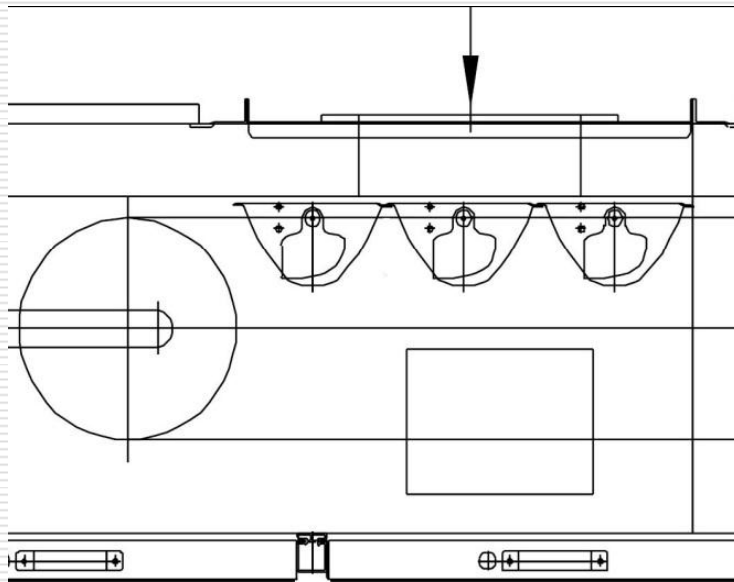
The bucket elevator needs only one drive, even for units with several loading- and unloading ports. This equates to substantial savings in controls and system integration.



# Innovations of feature

---

□ *Overlapping buckets*



At the loading stations, in the horizontal plane, all the buckets are in an overlapping position. This together with the bucket sleeve system ensures an optimum bucket filling.

# Innovations of feature

---

□ *Easy to install*

Our elevators are always shipped in modules to our customer.

Customers have the option to install the installation themselves, with a final check of an Apollo mechanic this with regard to warranty.



# Innovations of feature

---

□ *Low maintenance*



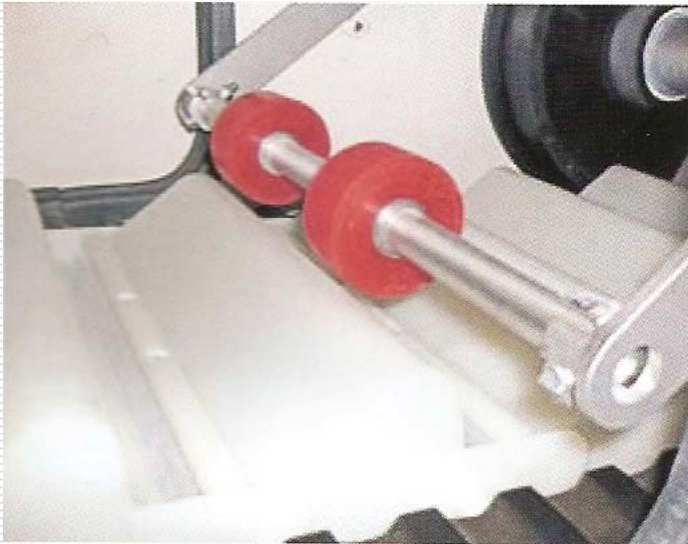
Only high quality components needing little maintenance are used throughout. All models have easy to remove inspection covers and a conveniently located inspection window. Drawers are provided underneath all horizontal sections to facilitate easy cleaning and the inside walls are smooth, thereby preventing dust build-up. All bearings are mounted outside for easy access. The buckets have a quick release mechanism to facilitate fast installation or removal of buckets. All bucket elevators are quipped with an automatic chain tensioning device and built-in overload protection.

---

# Innovations of feature

---

## *Additional options*



Following options are available on request:

- Dust proof enclosures
- Weather tight construction
- Anti-static buckets
- Stainless steel buckets
- Bucket cleaning system
- "Bucket Kocker" device
- Variable speed.

# Innovations of feature

---

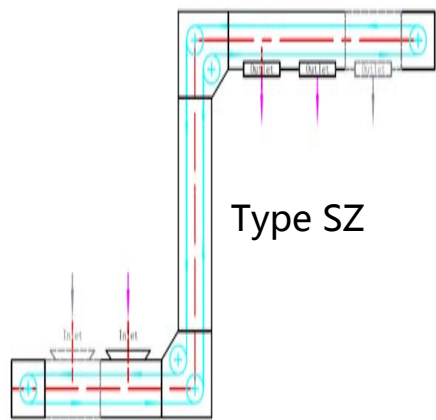
- *Safety protection & Overload protection*



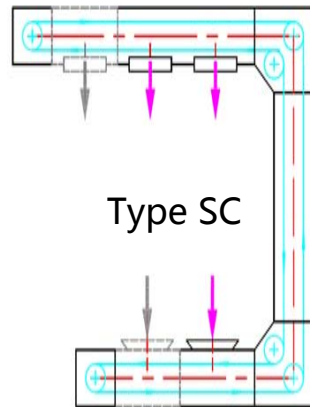
The bucket elevator is equipped with automatic safety protection system, to prevent any damages which might occur for whatever reason.

# Personalized solutions

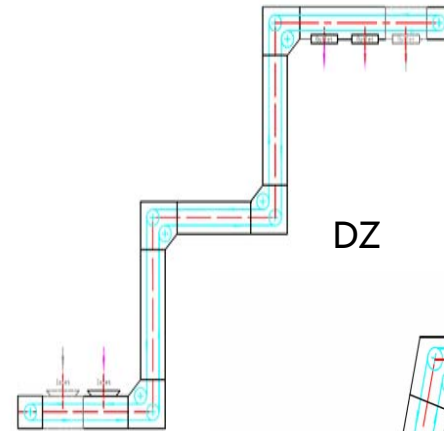
- Three standard types are available, sized to handle capacities of up to 10.000; 23.500 and 59.000 litres per hour. Apollo also recognizes that many of our customers have needs outside our standard models. We are therefore prepared to customize and find individual solutions for our customers.



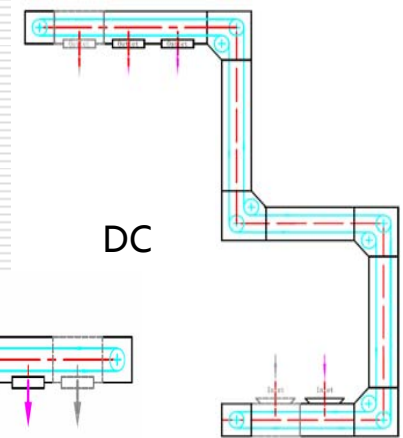
Type SZ



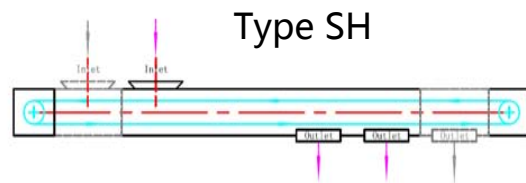
Type SC



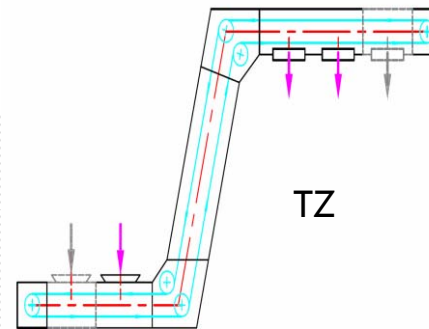
DZ



DC



Type SH



TZ

## Wide Application Fields

---

- ❑ Food & pharmaceutical
- ❑ Chemical & ceramic
- ❑ Building & metallurgical
- ❑ Cosmetic & agriculture
- ❑ Even in mechanical

as materials requiring gentle handling





# Thank You!

---

On behalf of Apollo we would like to thank you for your interest in our company.



If you wish to make an appointment or have a request for further specific information then please contact us on the following address:

---



# Contacts

---



**APOLLO VTS B.V.**

Modem 28 P.O. Box 39

NL-7741 MJ Coevorden NL-7740

AA Coevorden

Tel: +31(0)524 51 50 51

Fax: +31(0)52451 47 61

E-mail: [vts@apollo-bv.com](mailto:vts@apollo-bv.com)

Website: [www.apollo-vts.com](http://www.apollo-vts.com)



Sales & Service Agency in China

**SUZHOU CIDI M&E PRODUCTS CO., LTD**

Room 601, Fengyi Office Building, SIP

Suzhou,

Jiangsu Province, P.R.C, 215000

Tel: +86(0)512 6276 8535

Fax: +86(0)512 6760 2010

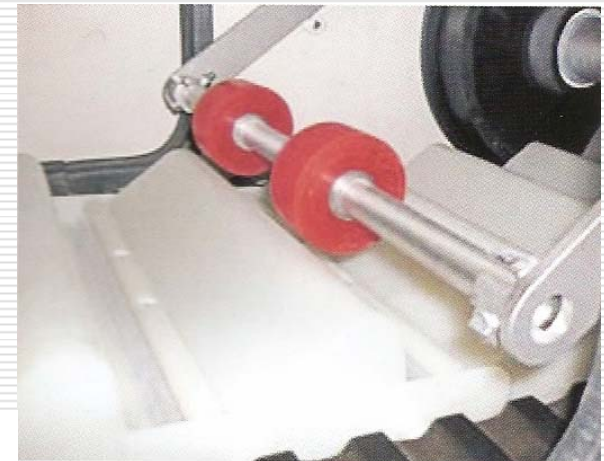
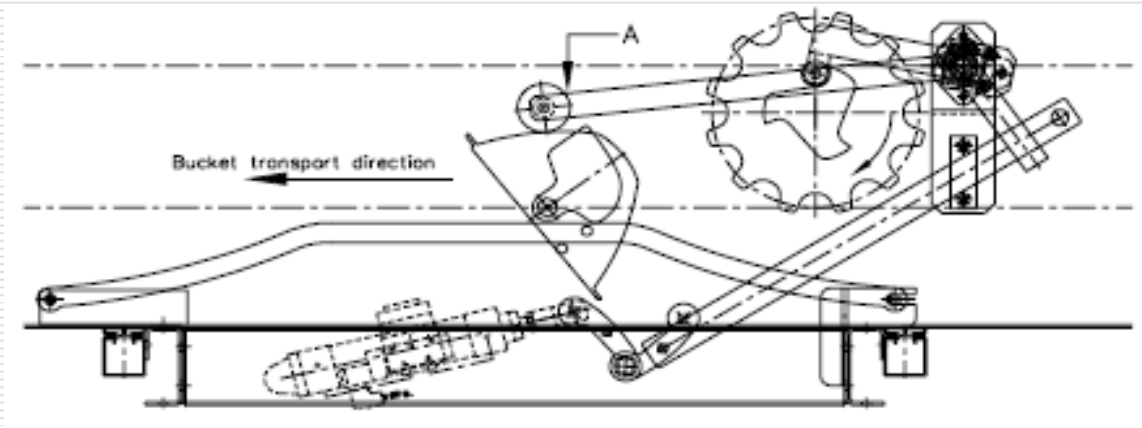
E-mail: [sales@suzhoucidi.com](mailto:sales@suzhoucidi.com)

Website: [www.suzhoucidi.com](http://www.suzhoucidi.com)

# Innovations of feature

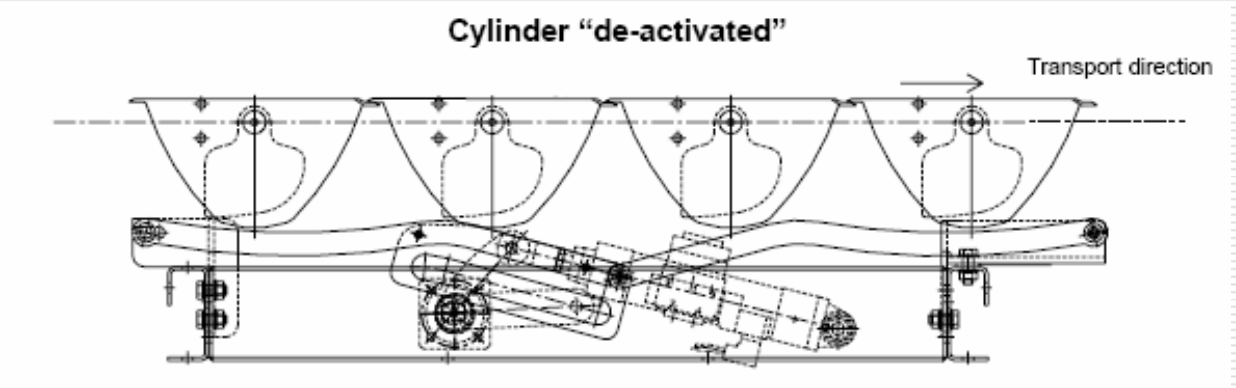
## □ *Bucket Knocker*

- The bucket knocker is there to remove any remaining product in the buckets by applying a hammer/knock effect on the bottom of the buckets while unloading.

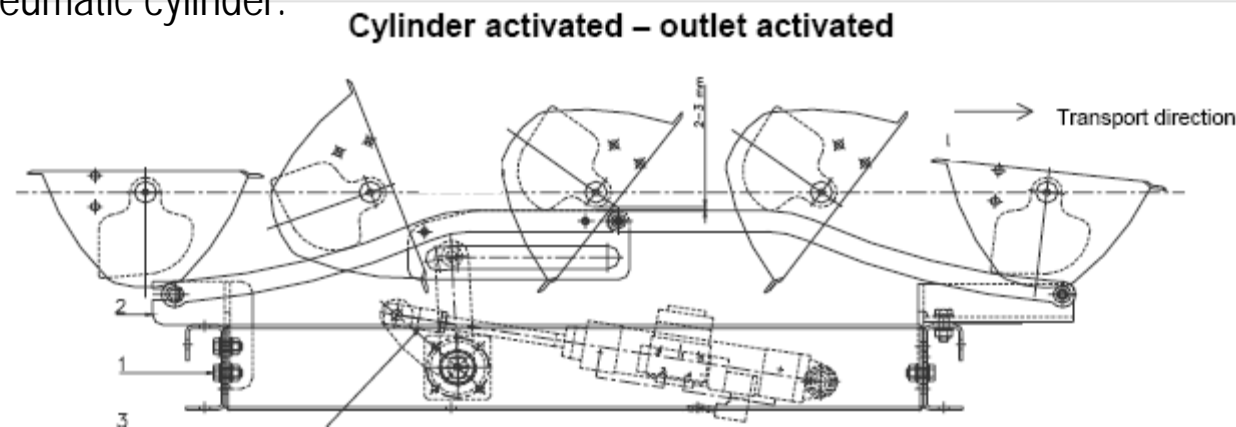


# Innovations of feature

□ *Bucket Discharge*



- The buckets are tipping on the discharging position where controlled via pneumatic cylinder.



# Innovations of feature

---

## □ *Bucket Sleeve*

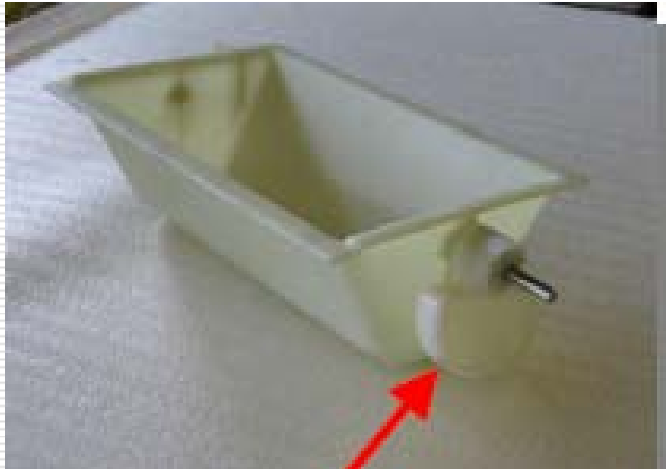
- The flexible bucket sleeve is around the feeding inlet on the top of the buckets, to prevent products spray out of bucket during feeding process. Then minimize the product loss and dust.



# Innovations of feature

---

## □ *About Bucket*



- Our standard bucket is made of synthetic material reinforced with glass fibre, with FDA/BGA approvals, colour natural.
- The optional material which is made of synthetic antistatic material, colour blue.
- And Stainless steel buckets, AISI 304
- 3 sizes of bucket for different:
  - type 100: 161 x 248 mm, approx 1,2 litre
  - type 200: 121 x 417 mm, approx 5,0 litre
  - type 600: 755 x 264 mm, approx 15,5 litre.
- The buckets are temperature resistant from -20 till +100 °C.